



# THE CONSERVATION CONNECTION

News from MCSWCD

## Now Accepting Orders for the 2025 Conservation Tree & Shrub Program!



*Protecting Today, Providing Tomorrow*

### INSIDE THIS ISSUE:

Tree & Shrub Program	Page 1
	Page 2
Fish Program Update	Page 3
AEM and County Organics Management Plan Farmer Survey	Pages 4-5
Stream Stabilization Project Highlight	Page 6
Reforestation Efforts	Page 7
District Partnerships and Staff Updates	Page 8
Holiday Tree Disposal	Page 9
Family Wildlife Activities	
4-Hr E&SC Trainings	Page 10
Tree & Shrub Order Form	Pages 11 - 12

For nearly 50 years, this conservation pre-order program has allowed landowners to purchase trees, shrubs and plants that are bare-root, cost-effective, and are native or naturalized to New York. All of our species offered are well-suited to the local climate and soil conditions, and are the best choice for supporting conservation efforts locally including but not limited to, wildlife food and shelter, erosion control, and natural windbreaks. Additionally, many species offered can be planted either in the landscaping or the yard to improve your home's curb appeal, require less watering, are more resistant to pests and diseases, and require less maintenance!

Featured on the next two pages are seven new species being offered this year. To view all of our species, including popular species brought back from last year, plus seed mixes, and enhancement items, please visit our website: <https://monroecountyswcd.org/tree-shrub-program/>



A detailed catalog of all of our items being offered, planting tips, Frequently Asked Questions (FAQs), and species information (spacing, pH, soils, shade tolerance, etc.) can be also be found on our website. Check it out!

Orders can be placed either online at our [District Square Site](#) or by filling out an order form and submitting it to our office via email or mail. Order forms can be found on our website or on the last page of this newsletter. We offer a variety of payment methods including cash,

check, or credit card that can be used on the order form, over the phone, or online. Please order early to ensure availability of species!

### IMPORTANT TREE & SHRUB PROGRAM DATES & DEADLINES

Pre-Orders Due	3/7/2025
Tree & Shrub Distribution	4/24/2025 & 4/25/2025 (9 am - 5 pm)
Overstock Sale	4/26/2025 (9 am - 11 am)

### 2024/2025 Dates & Deadlines

#### January 8

Erosion & Sediment Control Training

#### February 5

Erosion & Sediment Control Training

#### March 7

Tree & Shrub Program Order & Payment Deadline

### OFFICE CLOSED:

**Christmas** -  
December 25<sup>th</sup>

**New Year's** -  
January 1<sup>st</sup>

**Martin Luther King Jr. Day** -  
January 20<sup>th</sup>

**Presidents' Day** -  
February 17<sup>th</sup>

## Lots of New Items for 2025!

### TREES & SHRUBS



A returning customer favorite, **Eastern Redbud** is one of the most striking visuals of spring with its vibrant pink flowers blooming as soon as early April. These flowers are great for attracting early emerging pollinators who need all the food they can get as they start to emerge. Once the flowers are gone, lively heart-shaped leaves will take their place.

A medium to large growing tree, **Black Tupelo (Gum)** is known for its vibrant red fall foliage display. This adaptable tree is also commonly planted for erosion control, wildlife value, and landscaping purposes. The fruit produced are eaten by a variety of bird species including songbirds and woodpeckers.



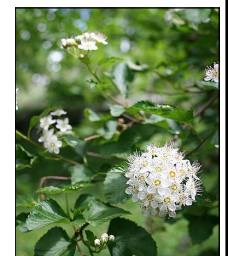
A popular tree previously only offered in our conservation packs, **Red Mulberry** is a beneficial tree for both our native wildlife and ourselves, as the berries are edible to both. Many species of songbirds, game birds, and mammals enjoy the fruits, while humans can use the berries for jams, jellies, and pies.

Uncommon, but a great shrub for establishment and erosion control, **Eastern Sand Cherry** has earned the nickname of Great Lakes sand cherry as it is found along shorelines of the Great Lakes including Lake Ontario. It's ease of establishment in sandy soils makes it great for erosion control, while also adding some color to your property with its pretty white flowers.



**Common Hackberry** is known for its immense wildlife value, providing food to birds, mammals, and pollinators. In the spring, green-yellow flowers will fill the tree. This coupled with its ability to tolerate drought make this tree great for urban/suburban properties.

Back from a few years ago, **Ninebark** is a beautiful shrub known for its clusters of white flowers benefitting our native pollinators. The seeds also provide food to many local bird species. The wide-spreading, recurved branches provide excellent cover for wildlife and this shrub is commonly used for buffer plantings and native landscaping.



### FLOWERING PLANTS



Also returning is the incredibly beautiful **Dense Blazing Star**. This flowering plant liven up any landscape no matter where it's planted. Grown in the right conditions and it will reach six feet! The flowers attract bees, butterflies, and hummingbirds who can't resist the stunning purple flowers. This is great native replacement for the invasive Butterfly Bush!

# End of an Era: Final Fish Stocking Program Held This Fall

The District will no longer be offering the bi-annual fish stocking program.

We want to thank all of our customers who have participated in this program since its inception over **50 years** ago! Thanks to you, our District assisted over **890 landowners** with stocking their ponds with over **246,500 fish** for vegetation control, recreation and game purposes, and baitfish.

Let's look at some of the highlights and fun facts from over the past 50 years:



## Did you know?

- The District used to have a separate trout stocking program in the 1980s
- Crayfish were once offered through this program
- Triploid grass carp weren't offered until 1995 and since then were a staple of the program thanks to their voracious eating of aquatic vegetation making them great for pond management

**Thank you to Phil and Don from Finger Lakes Aquaculture for their many years of dedication to providing fish to residents of Monroe County!**

**Residents who are looking to purchase triploid grass carp and game fish can reach out to the following hatcheries:**

**Finger Lakes Aquaculture**  
**7627 County Road 36**  
**Naples, NY 14512**  
**585-374-2974**

**Smith Creek Fish Farm**  
**5540 Route 362**  
**Bliss, NY 14024**  
**585-322-7805**

If you are a resident in Monroe County, and are still looking for recreation pond advice, the District will still be offering technical assistance to our residents for consults.

Please contact our office (585) 753-7380 or [mcswcd@monroecounty.gov](mailto:mcswcd@monroecounty.gov)

## District to Participate in Agricultural Environmental Management Program for 19<sup>th</sup> Year

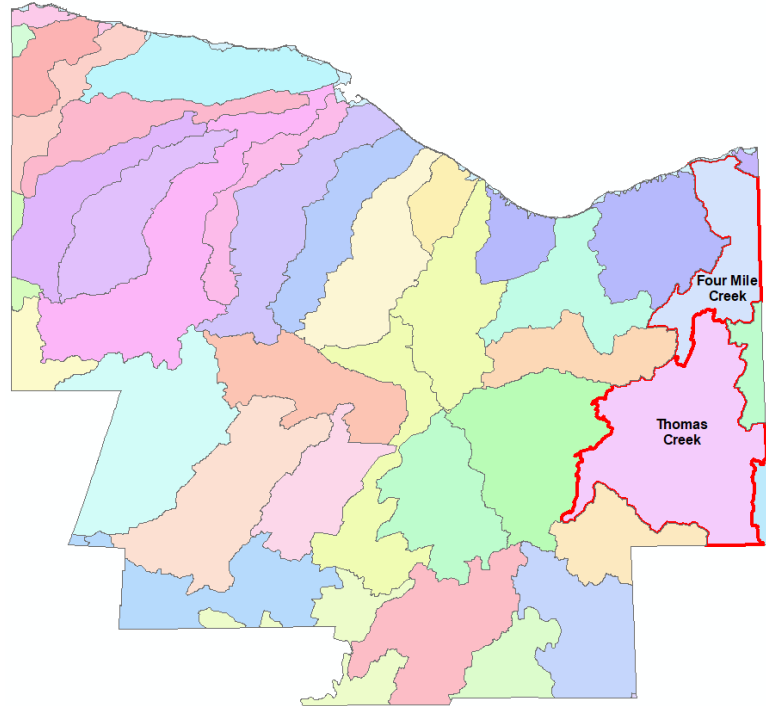
AEM is a locally led and implemented voluntary program focused on watershed based water quality concerns, farm-specific conservation practices, and individual farm business objectives. AEM has been a consistent framework for nearly 20 years to partner with farmers on environmental management to promote and protect the preservation of Monroe County's soil and water quality while helping to ensure farm viability for future generations.

AEM targets program, technical, and financial assistance to farms in a cost-effective manner through a well-established environmental planning process and implementing best management practices that are based on scientific principles and research.

For the 2025 AEM program year, the District will be primarily focusing on agriculture within the **Four Mile Creek** and **Thomas Creek** watersheds of Monroe County, within the Irondequoit Bay Basin (as shown to the right).

These watersheds have been assessed through AEM in prior years, and a primary goal for 2025 will be to work in the more urbanized watersheds with the farms, including the smaller livestock farms to try and increase awareness and outreach with the AEM program.

The AEM program is open to all interested farmers and agricultural landowners regardless of location in the county, and while we are currently focusing our outreach efforts on specific watersheds, we urge any farmers in the county that may be interested in the AEM program to contact the District for information on how to get started on a conservation plan for their operation.



If you are a current participant, please reach out to our office for possible funding for moving into the implementation phase of your conservation plan.

For more information on Monroe County's AEM program, the Monroe County Soil & Water Conservation District's **AEM 5-year Strategic Plan** can be found on our website at

<https://monroecountyswcd.org/aem/>



## Agricultural Winter BMP Spotlight: Leaving Crop Residue and Cover Cropping



While no crops are being grown or harvested during the winter, that doesn't mean there aren't ways for farms to help keep their soils healthy and protect water quality. Instead of tilling entire crop fields, adapting a no-till plan for fields will leave crop residue at the end of the harvest season and into winter. Leaving crop residue will increase the quality of your soil, reduce sheet and gully erosion (which can become more

common throughout winter as we continue to get multiple rain on snow events), and come next spring will provide increased plant-available moisture as crops begin to grow.

If leftover crop residue cannot be left on the fields, then planting a cover crop in the field should be considered. Cover crops provide soil protection and stability and keep nutrients in the soils for next year's crops. Common cover crop species include legumes, clover, small grains, and dense clustered grasses.

For more information on cover cropping, no-till, and any other agricultural best management practices reach out to our office to learn more about the Agricultural Environmental Management program: <https://agriculture.ny.gov/soil-and-water/agricultural-environmental-management>



## Monroe County Organics Management Plan Farmer Feedback Wanted!

Monroe County is inviting farmers to participate in a short survey aimed at understanding **organic waste generation** and **management practices** in Monroe County. Your insights are invaluable in helping us develop a comprehensive **Organics Management Plan** that not only enhances our community's sustainability efforts but also **supports your farming practices**.

By sharing your experiences, you will contribute strategies that could lead to better waste management solutions, improved soil health, and potential cost savings for your operations. Plus, your feedback will help us tailor resources and programs specifically designed to benefit farmers like you.

Join us in this important initiative — your voice matters!

Take the survey today and be a key player in shaping a greener future for our County.



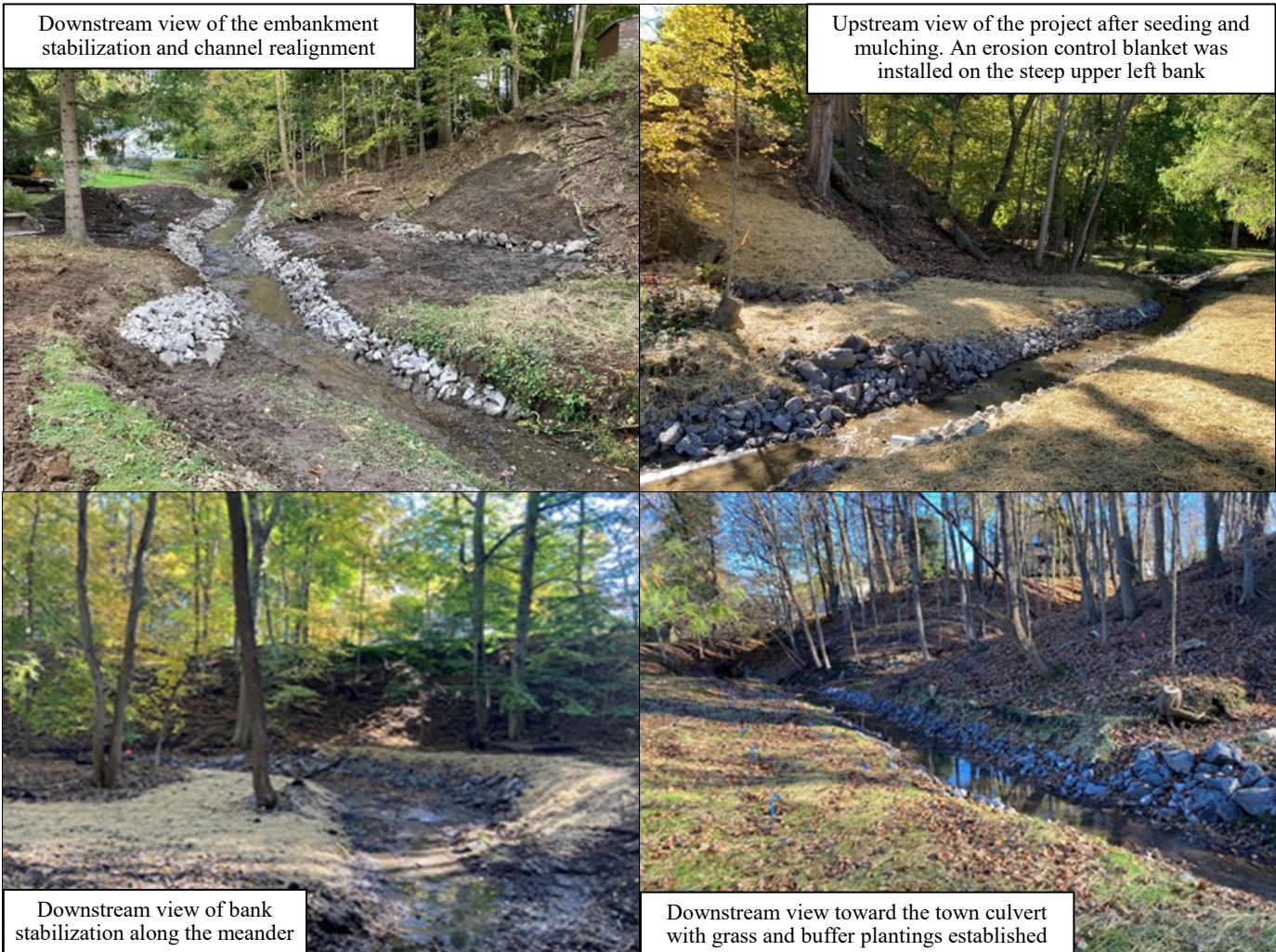
**SCAN ME!**

Or via email: [OMPComments@monroecounty.gov](mailto:OMPComments@monroecounty.gov)

# Streambank Stabilization in the Irondequoit Creek Watershed

In October, the District implemented a streambank stabilization project along a tributary to Irondequoit Creek in the Town of Pittsford. The project was a partnership between the District, the Town of Pittsford, and several impacted landowners with cost-share funding provided through the Finger Lakes-Lake Ontario Watershed Protection Alliance (FL-LOWPA) program. A significant shift in the flow direction had occurred in the past and resulted in increased erosion along a 20 foot high embankment and the adjacent banks. This section of stream is located only 1/3 of a mile from the confluence with the main branch of Irondequoit Creek which is classified as a trout segment.

In total, the project protected approximately 225 feet of streambank and included stabilization of 30 feet of severe vertical erosion along the embankment, 85 feet of channel realignment, and 55 feet of bank stabilization along the eroded upstream right bank meander along with maintenance clean out of accumulated sediments at the culvert crossing and protection of an adjacent outfall. Bank stabilization was accomplished via a combination of bank shaping and peaked stone/rock riprap protection. Once heavy construction was completed, District staff installed an erosion control blanket along the embankment, promptly seeded and mulched the riparian area, and installed live stakes and conservation tree and shrub plantings.



Downstream view of the embankment stabilization and channel realignment

Upstream view of the project after seeding and mulching. An erosion control blanket was installed on the steep upper left bank

Downstream view of bank stabilization along the meander

Downstream view toward the town culvert with grass and buffer plantings established

## 2<sup>nd</sup> Round of Reforestation Efforts Against Ash Tree Loss Implemented in Monroe County

This fall, the District continued reforestation efforts as part of the awarded \$200,000 in federal funds through the Fiscal Year 2022 Great Lakes Restoration Initiative (GLRI) Forest Restoration grant in an effort to plant over 11,000 trees and shrubs and restore 200 acres within Monroe County that have been decimated by the invasive Emerald Ash Borer (EAB).

EAB has decimated New York State’s ash tree populations since its first detection 15 years ago with Monroe County heavily affected with some of the highest ash tree density in the state. Therefore, reforestation is of the upmost importance to restoring healthy forests to provide considerable benefits to Monroe County residents including cleaner air and drinking water, wildlife habitat, erosion control along riparian corridors, carbon sequestration, maintaining natural public lands for access to enhance physical and mental wellbeing, and making communities more resilient.

Spanning 3 years, 1,280 trees were planted in the spring with an additional 1,695 trees planted this fall across ten sites by five partners. Monroe County Parks Department planted 1,360 trees at Black Creek Park, Ellison Park, Greece Canal Park, Northampton Park, Oatka Creek Park, and Powder Mills Park; Tinker Nature Park in Henrietta planted 46 trees around the park; Oatka Creek Watershed Committee planted 90 trees at undeveloped park land near Canawaugus Park in the Village of Scottsville and in partnership with Genesee County Village & Museum planted 44 trees on museum property along Oatka Creek; and Rush Recreation & Park Association planted 155 trees at Hundred Acre Park. Tree plantings will continue next spring through the spring of 2026 across the county.

If you are interested in volunteering for a planting effort, please reach out to our office. The District and our partner organizations are always looking for planting help!



350 large trees are delivered to Ellison Park for distribution to various MC Parks



Volunteer plantings through the Oatka Creek Watershed Committee



Student volunteers from RIT install caging at Hundred Acre Park



Trees planted at Tinker Nature Park in areas of ash loss (note the dead trees on the ground)



“USDA USFS is an equal opportunity provider.”

## Genesee Country Village & Museum Wins State Partnership Award

Please join the District in congratulating the Genesee Country Village & Museum (GCV&M) who received the Associate Member Award from the New York Association of Conservation Districts (NYACD) earlier this year in recognition of their strong support for repairing and restoring the riparian corridor along Oatka Creek in Monroe County!

This award recognizes a business that has worked with and provided service to the Soil & Water Conservation District to advance the District’s programs and promoting conservation efforts. The GCV&M has participated in several streambank stabilization and riparian buffer projects over the past decade, furthering water quality improvement in the Genesee River Basin within Monroe County. They also actively host and attend education programming like their annual Outdoor Fest or the District’s annual Conservation Field Days teaching residents of all ages and backgrounds about all things conservation.

The past and continued work of the GCV&M is commendable!



L to R: Board Chairman Rollin Pickering, Executive Director Kelly Emerick, GCV&M Nature Center Director Adam Henne, Board Vice-Chair Maureen Leupold and her husband Steve Leupold



L to R: GCV&M Nature Center Director Adam Henne and NYACD President Sam Casella



## Farewell to Legislative Board Member Susan Hughes-Smith

This month we are saying goodbye to Legislative Representative Susan Hughes-Smith, who served on our Board of Directors. In her time serving on our Board Susan’s passion for our mission was apparent, including her participation in our annual Envirothon event where she led the Current Issue topic in 2023.

Since 2022, Susan has represented the 14<sup>th</sup> legislative district in Monroe County representing the Town of Brighton and will continue to serve her district as a dedicated legislator and as an advisory committee member for the County’s Climate Action Plan.

Please join us in thanking Susan for her service to the District and our efforts!



## Proper Christmas Tree Disposal



When the holiday season ends and it's time to remove your tree, be sure to dispose of it in an eco-friendly manner through one of the following methods:



**Mulch:** Turning your trees into mulch is a common disposal method, and very easy. Chipping the tree traps the carbon so it isn't released back into the environment, and many municipalities or parks would likely accept your tree for mulch (See the recycling tip later on).

**Wildlife:** Placing the tree back into the environment can provide food and shelter for numerous wildlife. Even disposing the tree in a pond or lake (with permission) can provide food and cover for fish.

**Donate:** Turn your tree into a gift. Your local zoo may take it to give to its animals to play with; big cats will especially enjoy them. **DO NOT** just show up to a zoo, be sure to contact them to see if they are interested.

**Crafts:** Leftover tree parts make for great crafts. Look anywhere on the internet to find interesting and adorable crafts from mini wreaths to coasters to homemade fresheners.

**Gardening:** Branches from your tree can provide insulation to your garden bed, protecting from winter freezing and early spring thawing.

**Recycle:** The majority of cities, towns, and villages in Monroe County offer tree recycling programs through curbside pickup or drop-off locations. Be sure to remove all ornaments and tinsel first.

[monroecounty.gov/des-environmentalrecycling#christmas-trees](http://monroecounty.gov/des-environmentalrecycling#christmas-trees)

**\*\*\*DO NOT BURN YOUR TREES OR TAKE THEM TO LANDFILLS\*\*\***

## Winter Backyard Birding

With the usual food supplies scarce in winter, many bird species will turn their attention to your backyard feeders. A feeder that works great through the winter is a suet feeder, attracting woodpeckers, chickadees, titmice, and nuthatches.

If you're looking for a fun winter activity for you and your family, then consider making your own homemade suet in just five easy steps involving six ingredients.

1. In a bowl, mix together 3.5 cups of wild bird seed, 1 cup quick oats, and 1/2 cup of corn meal.
2. In another bowl, combine 1.5 cups of shortening (palm oil free) and 3/4 cups of nut butter and then melt them and stir until mixed together.
3. Pour this mixture into the dry ingredients from Step 1 and stir until mixed together.
4. Spoon the mixture into an ice tray or other small freezer-safe container.
5. Let it freeze for at least two hours and then place it outside in the feeder.
6. Don't have a suet feeder? Before freezing, mold the suet around a straw or something similar to create a hole when you remove from the freezer and when you take the suet out, remove the straw and put string or rope through the hole to hang from a tree for the birds.

Tufted Titmouse on a suet feeder



**Monroe County Soil & Water Conservation District**

145 Paul Road, Building 5  
 Rochester, NY 14624  
 Phone: 585-753-7380  
 M-F 8am-4pm

[mcswcd@monroecounty.gov](mailto:mcswcd@monroecounty.gov)

[www.monroecountyswcd.org](http://www.monroecountyswcd.org)

**Like us on Facebook and follow us on Instagram by visiting the links or using the QR codes below!**

<http://www.facebook.com/MonroeCountySWCD>

[https://www.instagram.com/monroecoswcd\\_ny/](https://www.instagram.com/monroecoswcd_ny/)



## Don't Miss Upcoming Stormwater Management Trainings!

The year's first NYS Department of Environmental Conservation-Endorsed 4-Hour Erosion & Sediment Control Trainings have been scheduled. Don't miss the first one of the year on January 8<sup>th</sup>, followed by February 5<sup>th</sup>. In order to be a qualified inspector or a trained contractor on permitted active construction sites in New York State, you must take this course. These classes will be virtual and run from 8:30 am until 1:00 pm.

Pre-registration is required for each class and the cost is \$100. Registration for our first class is required by January 3<sup>rd</sup>. For more information including class brochure, payment link, and registration visit our website at: <https://monroecountyswcd.org/4-hour-trainings/>

NYS DEC-Endorsed 4-Hr E&SC Trainings		
DATE	LOCATION	TIME
January 8, 2025	ZOOM	8:30 am - 1:00 pm
February 5, 2025	ZOOM	8:30 am - 1:00 pm

**Board of Directors:**

Rollin Pickering  
*Chair/NY Grange Rep.*

Maureen Leupold  
*Vice Chair/Member at Large*

Chuck Colby  
*Treasurer/Member at Large*

Marc Krieger  
*Asst. Treasurer/Farm Bureau Rep.*

Steve Brew  
*Legislative Rep.*

**District Staff:**

Kelly Emerick  
 (CPESC, CPSWQ, CPMSM)  
*Executive Director*

James Sroka  
*Soil & Water Resource Technician*

Kristin White  
*Principal Office Account Clerk*

Jacob Kearney  
*Conservation Program Specialist*



This newsletter is published quarterly by the Monroe County Soil & Water Conservation District and is available at no cost to interested landowners, land users, and to the general public. If you would like to receive our newsletter, call us with your email address or view it online at [www.monroecountyswcd.org](http://www.monroecountyswcd.org). Programs and services offered through the Monroe County Soil & Water Conservation District are made possible through the financial support of the County of Monroe, State of New York, specialized grant opportunities, and fundraising programs. All SWCD programs and services are offered on a nondiscriminatory basis without regard to age, color, national origin, political beliefs, religion, sex, age, marital status, sexual orientation, or disability. Our Board of Director meetings are open to the public; please call for information.



# Monroe County Soil & Water Conservation District

145 Paul Road, Bldg. 5, Rochester, NY 14624 (585) 753-7380

## 2025 Conservation Tree, Shrub & Plant Program

Visit our website to view/print our catalog: [www.monroecountyswcd.org](http://www.monroecountyswcd.org)

### PLEASE READ THIS SECTION! IMPORTANT DETAILS BELOW:

1. Orders may be placed by the following methods: (a) **Mailing** your order form with check or credit card info (b) **Email** your completed form to [mcswcd@monroecounty.gov](mailto:mcswcd@monroecounty.gov) with credit card info or call our office to pay over the phone (c) **Website** – use our online store to place an order and pay with a credit card at <https://www.monroecountyswcd.org/tree-shrub-program/>

**All orders must be received by March 7, 2025.**

2. If using this form, write the # of packs you would like to order in the “quantity” column and then the “total” cost in the total column. Repeat process for each species you would like to order. Please note each species may be offered in different quantities: 10, 50 and/or 100 plants (quotes for 500 or more are available by calling our office). Sales tax is included in pricing. Complete the page total and order total on reverse side of form.  
**Sales Receipts will be sent once orders are processed.**

3. Mark Your Calendars!! Pick Up for orders will be: **April 24 & 25, 2025** from **9:00 a.m. – 5:00 p.m.** at the:  
**Monroe County ecopark, 10 Avion Drive, Rochester, NY 14624.**

**\*YOU MUST HAVE YOUR SALES RECEIPT OR SOME FORM OF IDENTIFICATION TO RECEIVE YOUR TREES\***

\*Please be sure to pick up your order on the scheduled distribution dates. If you are unavailable, someone else may pick up on your behalf, but you **must** notify our office with the name of the pick-up person. Orders not collected by May 2, 2025 will be forfeited.

**We do not sell or share your contact information!**

Name:  Email:

Please provide an email in order to receive receipts and any updates to the status of your order.

Address:  City:  State:  Zip:

Phone:   Check if you would like to be added to our electronic mailing list.

So we can develop programing that meets your needs, please indicate your primary planting purpose:

Wildlife Habitat  Wetland Habitat  Aesthetics  Windbreak  Erosion Control  Other

If picking up later than the original dates (4/24 & 4/25), understand that it risks the viability of the plants and the District is NOT responsible for loss of plant stock due to: late pickup, mishandling or poor weather conditions.

	Name (Genus species) & Approximate Size	Pricing Per Pack			# of 10 pks.	# of 50 pks.	# of 100 pks.	Total Cost
CONIFERS	Balsam Fir ( <i>Abies balsamea</i> ) 7-12" <b>Transplants</b>	\$25 per 10	\$103 per 50	\$195 per 100				
	Colorado Blue Spruce ( <i>Picea pungens</i> ) 15"+	\$16 per 10	\$61 per 50	\$110 per 100				
	Douglas Fir ( <i>Pseudotsuga menziesii</i> ) 15"+	\$16 per 10	\$61 per 50	\$110 per 100				
	Eastern White Pine ( <i>Pinus strobus</i> ) 14-18"	\$17 per 10	\$66 per 50	\$121 per 100				
	Fraser Fir ( <i>Abies fraseri</i> ) 9-12" <b>*SMALLER SIZE*</b>	\$17 per 10	\$64 per 50	\$117 per 100				
	Norway Spruce ( <i>Picea abies</i> ) 15"+	\$16 per 10	\$61 per 50	\$110 per 100				
	White Spruce ( <i>Picea glauca</i> ) 15"+	\$16 per 10	\$61 per 50	\$110 per 100				
SHRUBS	American Hazelnut ( <i>Corylus americana</i> ) 12-18"	\$22 per 10	\$94 per 50					
	Eastern Sand Cherry ( <i>Prunus pumila</i> ) 12-18" <b>NEW!</b>	\$21 per 10	\$92 per 50					
	Ninebark ( <i>Physocarpus opulifolius</i> ) 12-18" <b>NEW!</b>	\$20 per 10	\$88 per 50					
	Red Osier Dogwood ( <i>Cornus sericea</i> ) 12-24"	\$20 per 10	\$84 per 50					
TREES	American Sycamore ( <i>Platanus occidentalis</i> ) 12-18"	\$21 per 10	\$91 per 50					
	Black Tupelo (Gum) ( <i>Nyssa salvatika</i> ) 12-18" <b>NEW!</b>	\$21 per 10	\$89 per 50					
	Common Hackberry ( <i>Celtis occidentalis</i> ) 12-18" <b>NEW!</b>	\$22 per 10	\$95 per 50					
	Eastern Redbud ( <i>Cercis canadensis</i> ) 18-24" <b>*BIGGER SIZE* NEW!</b>	\$24 per 10	\$106 per 50					
	Paper Birch ( <i>Betula papyrifera</i> ) 12-24"	\$20 per 10	\$84 per 50					
	Red Maple ( <i>Acer rubrum</i> ) 12-18"	\$20 per 10	\$84 per 50					
	Red Mulberry ( <i>Morus rubra</i> ) 12-18" <b>NEW!</b>	\$21 per 10	\$91 per 50					
<b>THERE'S MORE ON THE BACK – FLIP OVER!!!</b>					Total Page 1 \$ _____ .00			
					Carry Page 1 total to Page 2			

	<i>Name (Genus species) &amp; Approximate Size</i>	<i>Pricing Per Pack</i>		<i># of 10 pks.</i>	<i># of 50 pks.</i>	<i># of 100 pks.</i>	<i>Total Cost</i>
<b>TREES (cont.)</b>	Red Oak ( <i>Quercus rubra</i> ) 12-24"	\$20 per 10	\$84 per 50				
	Sugar Maple ( <i>Acer saccharum</i> ) 12-18"	\$27 per 10	\$120 per 50				
	White Flowering Dogwood ( <i>Cornus florida</i> ) 12-18"	\$22 per 10	\$98 per 50				
	White Oak ( <i>Quercus alba</i> ) 12-18"	\$21 per 10	\$90 per 50				
<b>Oth</b>	Dense Blazing Star ( <i>Liatris spicata</i> ) Dormant large bulb <b>NEW!</b>	\$14 per 10	\$54 per 50				
	Streamco Willow ( <i>Salix purpurea</i> ) Live stakes, 12"	\$18 per 10	\$76 per 50				

<b>WILDLIFE &amp; CONSERVATION MULTI-PACKS</b>			<i>Pricing Per Pack (tax included)</i>	<i>Quantity</i>	<i>Total \$</i>
<b>1. Edible Fruit Multi-Pack:</b> 10 plants (9-15" except Strawberry which is a dormant rooted clump): 2 Seedlings each: Blackberry, Blueberry (Jersey), Blueberry (Blue Ray), Raspberry, Strawberry			\$39		
<b>2. Evergreen Multi-Pack: Transplants of varied size; see catalog for specific sizes</b> 10 plants: 2 each: Balsam Fir, Colorado Blue Spruce, Eastern White Pine, Fraser Fir, White Spruce			\$38		
<b>3. Native Flowering Tree &amp; Shrub Multi-Pack: <span style="color: red;">NEW MIX!</span></b> 10 plants (18-24"); 2 Seedlings each: <span style="color: red;">Downy Serviceberry</span> , Elderberry, Eastern Redbud, Red Osier Dogwood, White Flowering Dogwood			\$33		
<b>4. Streamside Multi-Pack: <span style="color: red;">NEW MIX!</span></b> 10 plants (18-24"); 2 Seedlings each: American Sycamore, <span style="color: red;">Pussy Willow</span> , Red Osier Dogwood, Buttonbush, River Birch			\$31		
<b>5. Wild Berry Pack: *SMALLER SIZE*</b> 10 plants (6-12"); Seedlings: 3 Elderberry, 2 Shadblow Serviceberry, 3 Native Flowering Raspberry, 2 Red Mulberry			\$33		

<b>SEED MIXES &amp; OTHER ITEMS</b>			<i>Pricing Per Pack (tax included)</i>	<i>Quantity</i>	<i>Total \$</i>
<b>Full Sun Wildflower Seed Mix:</b> A mix of annuals, perennials and biennials for full sun.			4 oz. - \$11.00		
<b>Partial Sun Wildflower Seed Mix:</b> A mix of annuals, perennials and biennials for partial sun.			4 oz. - \$12.00		
<b>Wildlife Food Plot Seed Mix:</b> A perennial mix of White Clover, Soy Bean, Chicory, and Alfalfa to enhance the habitat offered to wildlife. Suitable for ¼ acre.			10 lb. Bag \$48.00		
<b>Bat Box:</b> Bats consume many insects! Encourage them to stay in your area by providing shelter.			\$21.00		
<b>Bluebird Nest Box:</b> Provide habitat for our state bird!			\$22.00		
<b>Fertilizer Tablets:</b> Slow release; 2 yr. life. 10 tablets per bag.			\$2.00/bag		
<b>Flags:</b> 3 ft. wire with colored flag. Bundle of 100.			\$24.00/bundle		
<b>Tree Tubes:</b> 48" biodegradable tubes to protect trees from deer & small mammal damage. Stakes & nets included.			Single - \$11.00		
			10 pk.-\$86.00		
			50 pk.-\$412.00		

<p><b>Online ordering and checkout is available through our website OR by mailing/emailing this form with payment provided via check or credit card</b> (detailed options on front page).            Mail forms/checks to: Monroe County SWCD, 145 Paul Road, Bldg. 5, Rochester, NY 14624            Email forms to: <a href="mailto:mcsxcd@monroecounty.gov">mcsxcd@monroecounty.gov</a>            Make checks payable to: Monroe County SWCD            Credit card payments:            We accept <b>Visa/Mastercard/Discover</b> (<i>American Express not accepted at this time</i>)</p> <p><b>Name on Card:</b> _____ <b>Card #</b> _____</p> <p><b>Expiration Date:</b> ____/____/____ (Month/Year) <b>CVV Code:</b> _____ (3 digit code on back of card)</p> <p>Pick up of your order will be at the Monroe County ecopark. For directions: <a href="http://www.monroecounty.gov/ecopark">www.monroecounty.gov/ecopark</a>  <b>**ALL ORDERS MUST BE RECEIVED BY MARCH 7, 2025. **</b></p>	<i>Total Pg. 2</i> \$ _____ .00
	<i>Total Pg. 1</i> \$ _____ .00
	<b>Total Payment :</b> \$ _____ .00
	<i>Please do NOT add sales tax</i>

**Please Read:** All seedlings are bare root stock. Consult our catalog ([www.monroecountyswcd.org](http://www.monroecountyswcd.org)) for detailed descriptions of what a bare root plant is and other details. Stock may be used for wildlife habitat, erosion control, reforestation, windbreaks, landscaping, etc. All trees & shrubs sold are to be used for these practices. Trees & shrubs are sold with the understanding that they will not be removed from the planted site for resale with the roots attached. Orders are filled on a first-come, first-serve basis. The District reserves the right to refund payment on items if they should become unavailable. Because the District cannot ensure proper planting location, guard against improper planting or handling, guarantee sizes (due to the growing season and/or weather related problems); the District will not be responsible for replacement or refunds of orders after distribution. Returned checks WILL NOT be resubmitted and will incur a \$20 fee, followed by the need for a cash or money order payment. Orders not picked up by May 2<sup>nd</sup> will be forfeited without refund. Credit card refunds will be subject to a 5% fee deducted from the total amount of purchase.