

THE GENESEE RIVER INTERSEEDING PROGRAM



© Greg Roth

The interseeder is designed to plant three rows of cover crop in each corn row at the V7 or earlier stage. Interseeding cover crops in standing row crops, or relay planting, makes it possible to develop a soil cover year-round and can help farmers save time and money. When the corn is harvested, cover crops burst to life, maturing faster than with any other planting method. Your local Soil and Water Conservation District staff can help you select the right covercrop seed mix for your farm. The interseeder is an environmentally responsible way to improve crop yields while reducing soil erosion and runoff.

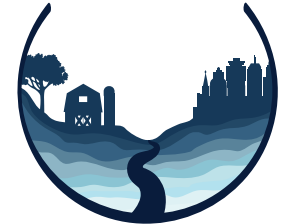
Benefits of relay cover cropping include supplying nutrients to row crops, suppressing weeds, providing supplemental forage, and promoting healthy soils. In the fall, the machine can be converted into a no-till drill for winter cover crop planting. Work with your Soil and Water Conservation District staff to reserve a machine for the next planting season.

INTERSEEDER DETAILS

- 6-Row Capacity
- Weight: 4,500 lb
- Width: 16.5 feet
- Required Tow Capacity: 6,000 lb
- Required Horsepower: 110-130 hp
- Custom Built by InterSeeder Technologies
- Two Units Available for Rent

FOR QUESTIONS OR RESERVATIONS, CONTACT YOUR LOCAL SOIL & WATER CONSERVATION DISTRICT OFFICE

GENESEE RIVER WATERSHED
COALITION OF CONSERVATION DISTRICTS



RENTAL RATES

Interseeders and No-Till Drill:
\$15/acre

- Farmers within the Genesee River Watershed will be given priority
- Transport of the machine will be the responsibility of the farmer
- Farms must provide proof of insurance
- Seed mixes not included

The Genesee River Watershed

